



# ¿Cómo se calcula una Huella de la **organización**?



Global Footprint Network  
Advancing the Science of Sustainability

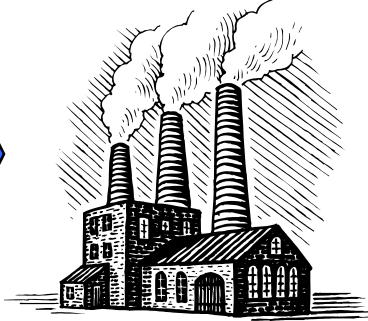
**Supply Chain**



(e.g., steel)



**Operations**



(e.g., paper, electricity, etc.)



**External Activities**



(e.g., employee commute)

=

**Product**



(e.g., car)



**Product Use**



(e.g., mpg)



**Societal Infrastructure**



(e.g., miles of roads)



# Ejemplo 1:

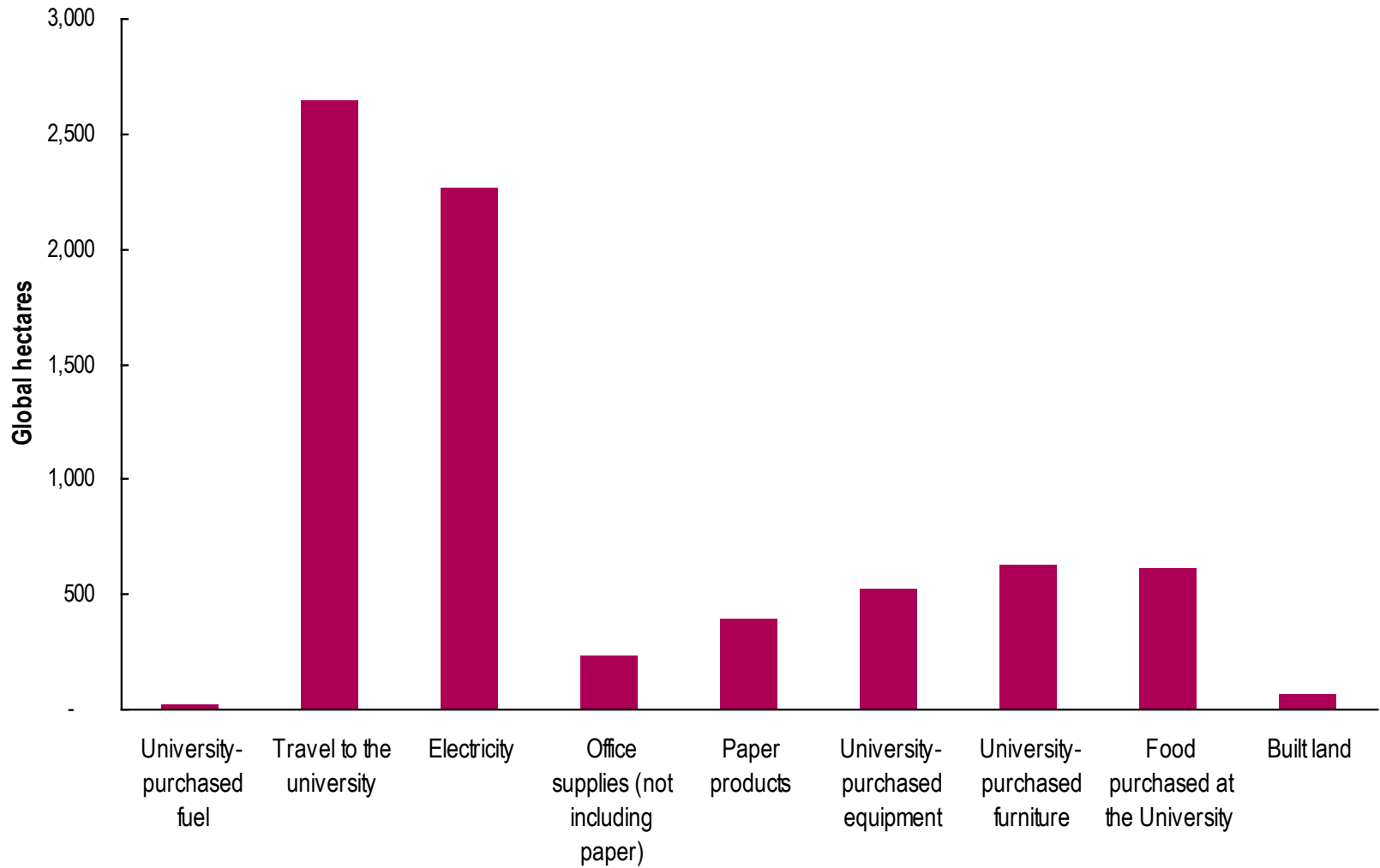
**PONTIFICIA UNIVERSIDAD CATÓLICA DEL  
PERÚ – UNIVERSITY FOOTPRINT**



DESCRIPTION	UNITS	CONSUMPTION	TOTAL Weight	FAO Code	g->kg	Intensity	EF Intensity	EF
		[units]	[g]		[kg g <sup>-1</sup> ]	[kg CO <sub>2</sub> kg product <sup>-1</sup> ]	[gha (t CO <sub>2</sub> ) <sup>-1</sup> yr <sup>-1</sup> ]	[gha]
BIG NOTEPAD	UNIT	77	19,643	1683	0.001	0.37	0.28	0.0
BOND ENVELOPE 1/2 LEGAL	UNIT	1,893	5,823	1674	0.001	0.37	0.28	0.0
BOND ENVELOPE 80 GR 11X22,5 CM WITH WINDOW	UNIT	7,420	14,692	1674	0.001	0.37	0.28	0.0
BOND ENVELOPE A4	UNIT	2,639	13,168	1674	0.001	0.37	0.28	0.0
BOND ENVELOPE EXTRA OFICIO	UNIT	1,218	14,985	1674	0.001	0.37	0.28	0.0
BOND ENVELOPE LEGAL	UNIT	1,206	7,419	1674	0.001	0.37	0.28	0.0
BOND ENVELOPE LETTER 21.5 X 28	UNIT	301	1,450	1674	0.001	0.37	0.28	0.0
BOND PAPER 56 GR 61X86 CM WHITE	UNIT	14,773	433,995	1674	0.001	1.45	0.28	0.2
BOND PAPER 80 GR A4 COLOR	UNIT	431,196	2,151,496	1674	0.001	1.45	0.28	0.9
CARDBOARD WHITE SAHARA KIMB. PRE/OPALINA 180 GR. A<	UNIT	9,910	111,256	1681	0.001	0.37	0.28	0.0
ENVELOPE BOND CARTA 11.5 X 16.2 CM	UNIT	2,133	3,179	1674	0.001	0.37	0.28	0.0
ENVELOPE BOND OFICIO 11X22 CM	UNIT	2,541	4,918	1674	0.001	0.37	0.28	0.0
ENVELOPE MANILA A4	UNIT	71,330	1,810,100	1674	0.001	0.37	0.28	0.2
ENVELOPE MANILA CARTA	UNIT	1,300	8,220	1674	0.001	0.37	0.28	0.0
ENVELOPE MANILA EXTRA OFICIO	UNIT	14,872	930,589	1674	0.001	0.37	0.28	0.1
ENVELOPE MANILA LEGAL	UNIT	7,968	249,292	1674	0.001	0.37	0.28	0.0
ENVELOPE MANILA MEDIUM LEGAL	UNIT	17,444	409,323	1674	0.001	0.37	0.28	0.0
EXAM FORMAT RED 140 (3031) / GREEN (3030)	THOUS,	23	115,509	1683	0.001	0.37	0.28	0.0
FILE MANILA A4	HUNDR	662	1,681,162	1674	0.001	0.63	0.28	0.3
FILE MANILA LEGAL	UNIT	155	4,863	1674	0.001	0.63	0.28	0.0
HEADED ENVELOPE BOND LETTER 11X 16 CM	UNIT	2,534	3,568	1674	0.001	0.37	0.28	0.0
HEADED ENVELOPE BOND OFICIO 11X22 CM	UNIT	17,731	34,327	1674	0.001	0.37	0.28	0.0
HEADED ENVELOPE MANILA 1/2 LEGAL	UNIT	12,673	198,248	1674	0.001	0.63	0.28	0.0
HEADED ENVELOPE MANILA A4	UNIT	40,425	1,025,829	1674	0.001	0.37	0.28	0.1
HEADED ENVELOPE MANILA LEGAL	UNIT	4,734	148,111	1674	0.001	0.37	0.28	0.0
HEADED PAPER BOND A4	THOUS,	52	259,958	1674	0.001	1.45	0.28	0.1
HORIZONTAL DIARY / TYPE NOTEBOOK DIARY/WEEKLY NOT	UNIT	914	233,161	1683	0.001	0.93	0.28	0.1
INTERLEAVE PAPER TOWEL	UNIT	27,700	12,146,450	1676	0.001	0.02	0.28	0.1

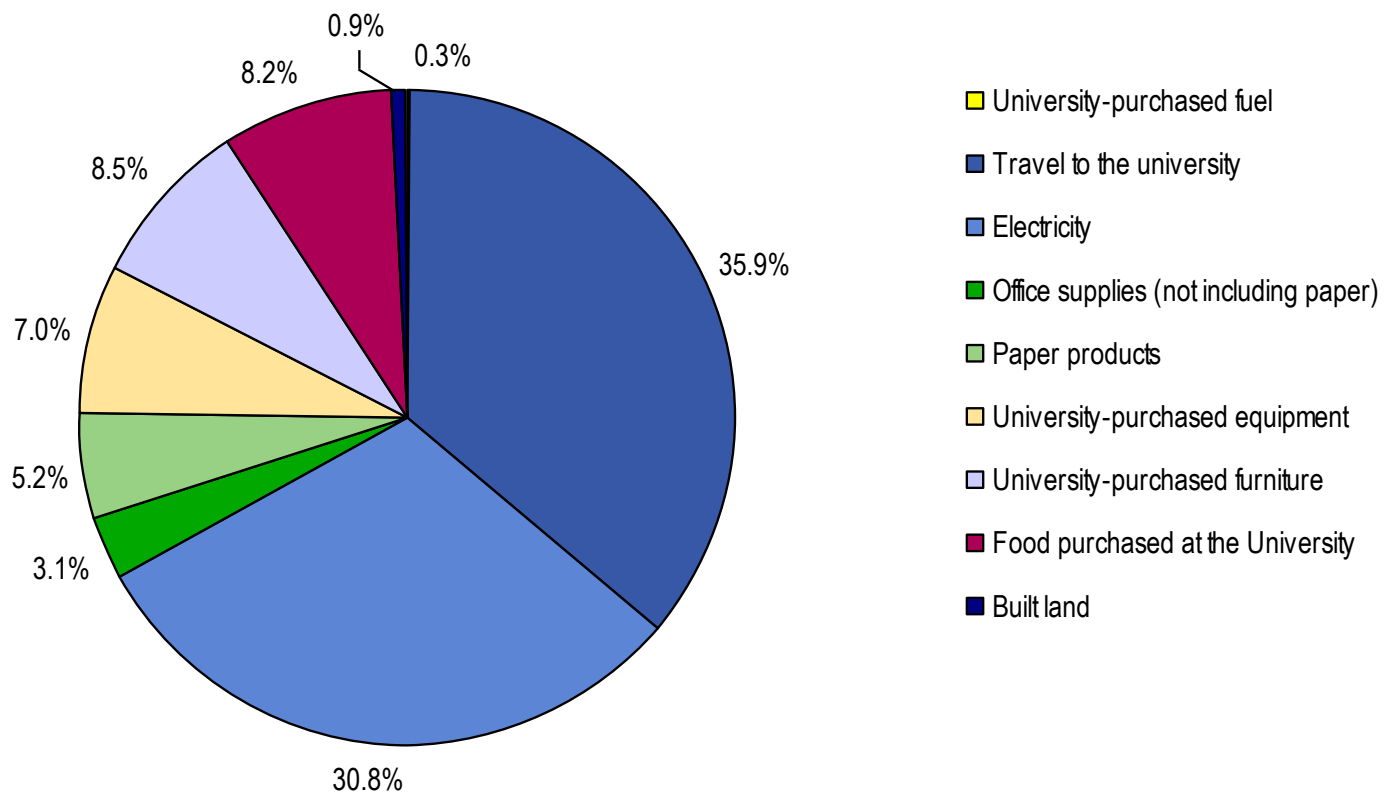


**PUCP University Footprint by consumption category**





### PUCP University Footprint, by percentage



# Food

	<b>Caloric content</b> [calories/plate]	<b>Food served</b> [# plates/day]	<b>Total Calories served</b> [daily calories served]	<b>EF</b> [gha]
1 Plato Básico	1,025	2,350	1,055,890	362
2 Menú	2,250	650	641,096	220
3 Menú Económico	1,025	140	62,904	22
<b>Total</b>				<b>603</b>

Source: [Final from Jose\ALIMENTOS CAFETERIAS FINAL.xls](#)

**Peru**

<b>Vegetal products</b> [kcal/capita/day]	<b>Animal products</b> [kcal/capita/day]	<b>Total</b> [kcal/capita/day]
2,245	333	2,578

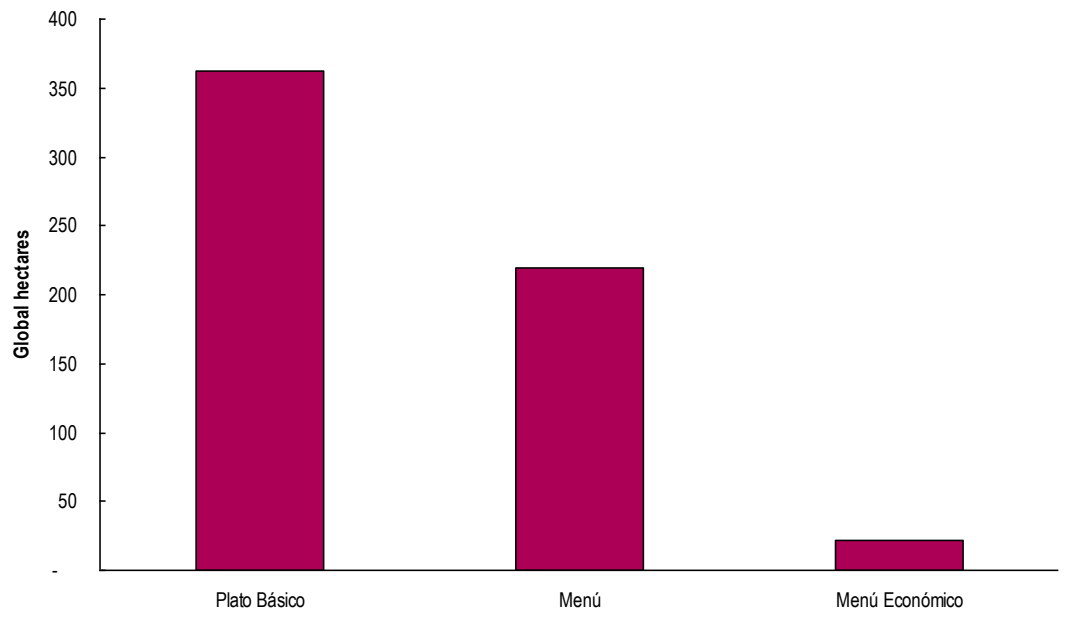
Source: FAOSTAT, 2009

**Food Footprint (2005)**

	<b>Cropland</b> [gha/capita]	<b>Pasture</b> [gha/capita]	<b>Fishing ground</b> [gha/capita]	<b>Forest</b> [gha/capita]	<b>Carbon</b> [gha/capita]	<b>Built area Total</b> [gha/capita]	
Argentina	0.27	0.42	0.10	0.01	0.06	0.01	0.88
Brazil	0.30	0.54	0.01	0.03	0.00	0.01	0.89
Peru (proxy)	0.29	0.48	0.06	0.02	0.03	0.01	0.88

Source: Global F

PUCP Food Footprint, by plate type (based on total calories served per plate)





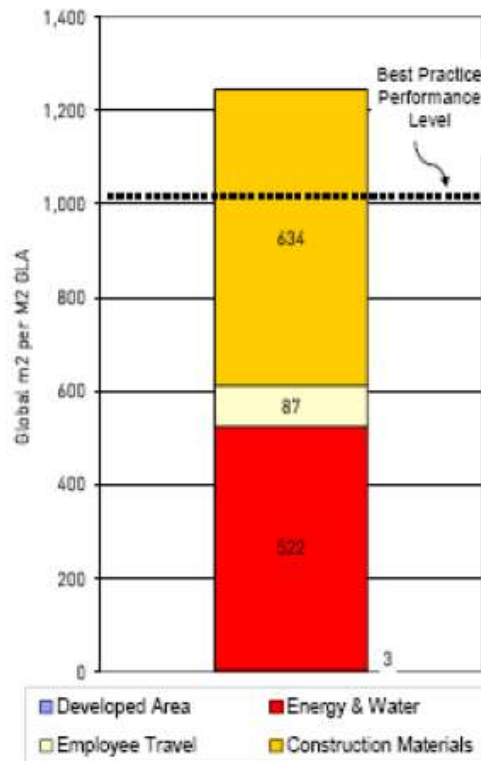
# Ejemplo 2:

**GPT – RETAIL CALCULATOR**





## General Fashion/General Retail



Average Shop Footprint: **1,200** m<sup>2</sup>/m<sup>2</sup> GLA

Your Target: **35% LESS**  
(800 m<sup>2</sup>/m<sup>2</sup> GLA)

### Top 5 things to meet your target:

1. Achieve BCA minimum lighting standard of 20-25W/m<sup>2</sup>.
2. Achieve BCA shopfront criteria.
3. Use alternative floor finishes rather than ceramic tiles.
4. Use Green First laminate and MDF products in all cabinetry and shelving.
5. Set up public transport incentives for staff.



## Ejemplo 3:

**BC HYDRO – OPERATIONS FOOTPRINT**

Table 2: Preliminary EF Assessment of BC Hydro

(Units are global hectares)			
	<b>Estimate</b>	<b>Lower Range</b>	<b>Upper Range</b>
<b>Non-Generation Operations</b>			
<b>O &amp; M</b>			
Transmission & Substations	6,700	5,900	7,400
Distribution	*		
Buildings	800	700	900
Misc. <sup>1</sup>	6,300	5,700	6,900
<b>Heritage</b>			
Transmission	10,000	8,000	12,000
Substations	3,200	2,400	4,200
Distribution	24,000	21,000	28,000
Misc. <sup>2</sup>	400	300	500
<b>SUBTOTAL</b>	<b>51,000</b>	<b>44,000</b>	<b>60,000</b>
<b>Electricity Generation</b>			
<b>O &amp; M</b>			
Hydro	<100	<100	<100
Thermal	66,000	60,000	73,000
<b>Heritage</b>			
Hydro	206,000	145,000	267,000
Thermal	700	500	900
<b>SUBTOTAL</b>	<b>270,000</b>	<b>210,000</b>	<b>340,000</b>
<i>Footprint per annual GWh produced by BC Hydro <sup>3</sup></i>	5.9	4.6	7.5
<b>Total Footprint of Electricity Production and Distribution</b>	<b>320,000</b>	<b>250,000</b>	<b>400,000</b>

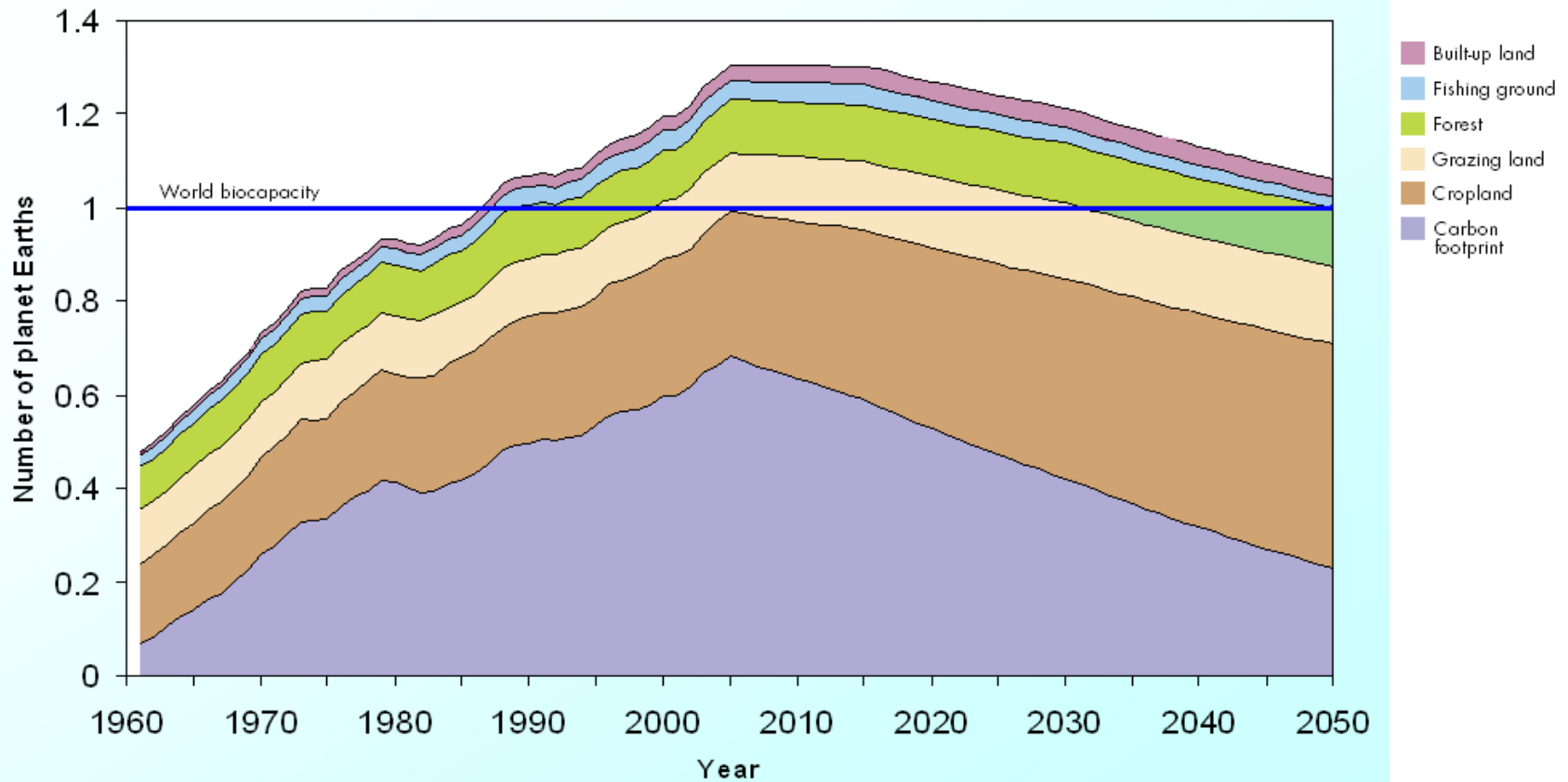


# Ejemplo 4:

**WBCSD – SCENARIO CALCULATOR**



## Vision 2050 Ecological Footprint by Component





Global Footprint Network  
Advancing the Science of Sustainability

David Moore  
Project Manager, Applications Group

[david@footprintnetwork.org](mailto:david@footprintnetwork.org)